



Mini Box

Folder-gluer machine for digital market

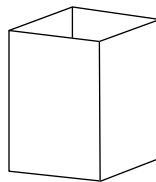
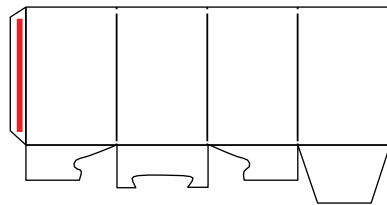
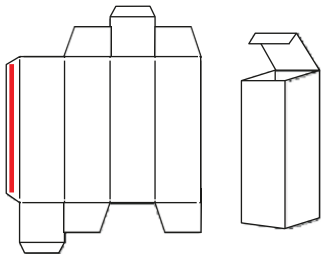
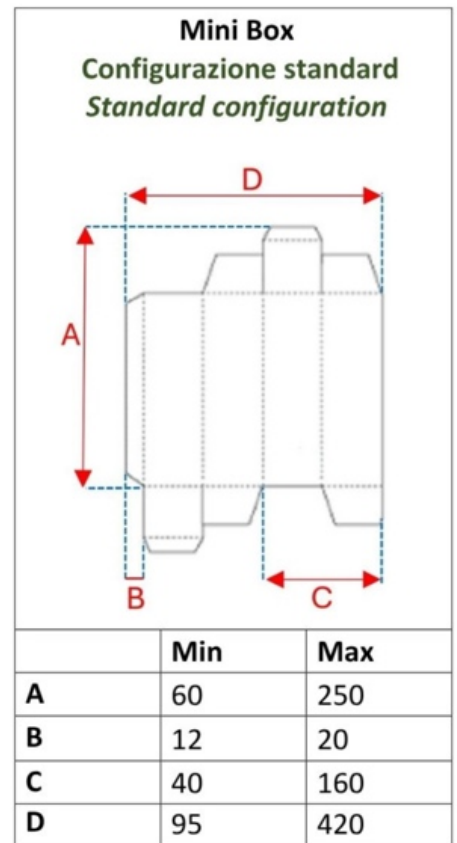


Folding-gluing machine with automatic feeder, manual delivery table and n.1 glue point for the production of straight-line boxes, specially designed for the digital market

Technical Characteristics	
Introduction format	500 mm
Paper weight	200 g/m ²

Products achievable with the Mini Box machine

* technical data are subject to change depending in material, dimensions and set-ups used



Linear boxes



SIA Starlett
Bikernieku 121P
Riga, LV-1021, Latvia
Tel.: +371 67531070
E-Mail: starlett@starlett.lv
Reg. No. 40003009567
VAT LV40003009567